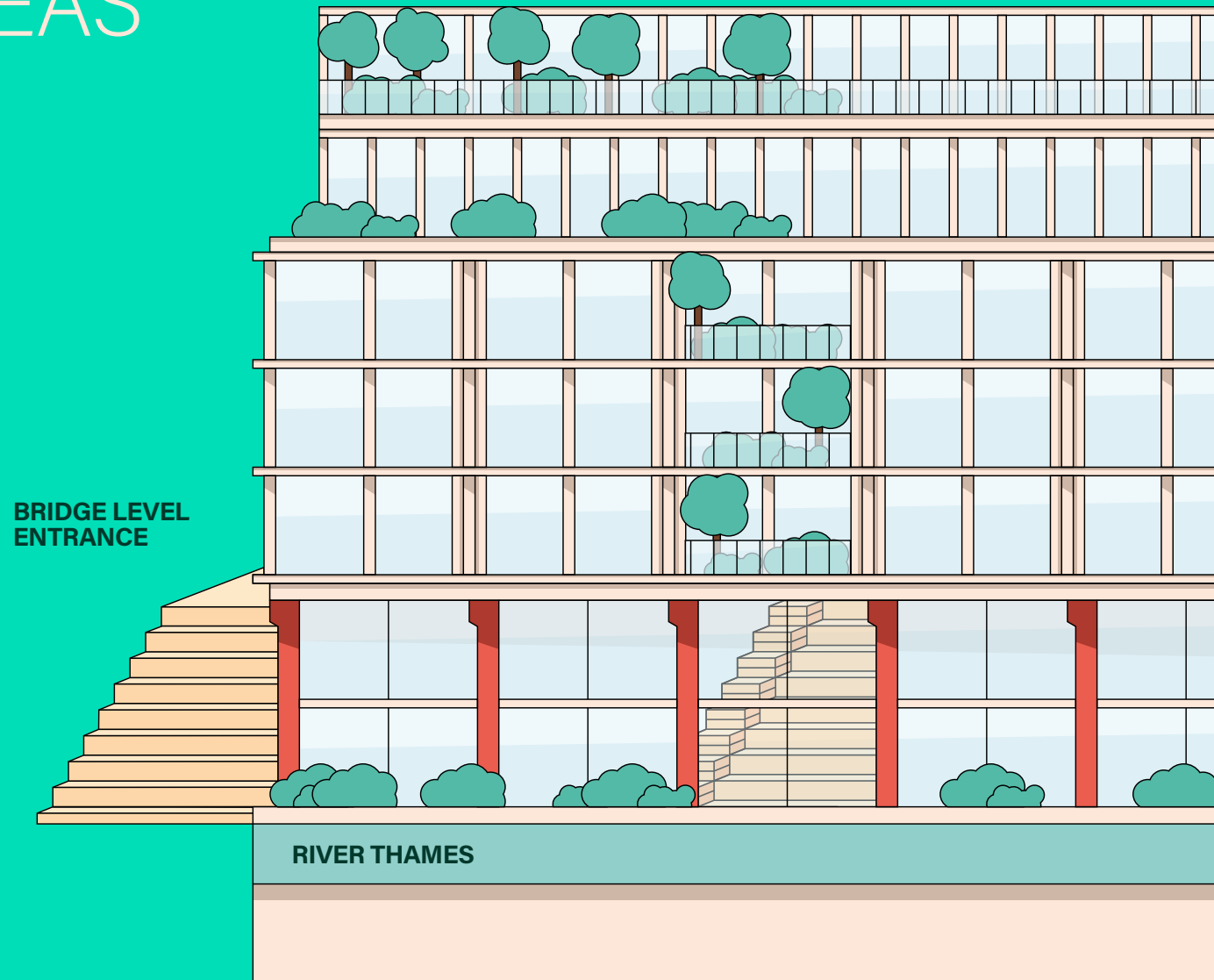


● ONE MILLENNIUM BRIDGE



SCHEDULE OF AREAS



	OFFICE	RETAIL / OFFICE	TERRACE
LEVEL 06	11,146 sq ft 1,036 sq m	9,718 sq ft 903 sq m	23,541 sq ft 2,187 sq m
LEVEL 05	47,497 sq ft 4,413 sq m		5,067 sq ft 471 sq m
LEVEL 04	55,934 sq ft 5,196 sq m		102 sq ft 9 sq m
LEVEL 03	54,007 sq ft 5,017 sq m		102 sq ft 9 sq m
BRIDGE LEVEL	36,578 sq ft 3,398 sq m	3,973 sq ft 369 sq m	102 sq ft 9 sq m
LEVEL 01	4,449 sq ft 413 sq m	9,550 sq ft 887 sq m	
RIVER LEVEL	4,096 sq ft 381 sq m	11,831 sq ft 1,099 sq m	
TOTAL	213,707 sq ft 19,854 sq m	35,072 sq ft 3,258 sq m	28,914 sq ft 2,686 sq m
BASEMENT	467 Bike Spaces	42 Showers	414 Lockers

RIVER LEVEL



15,926 SQ FT | 1,480 SQ M

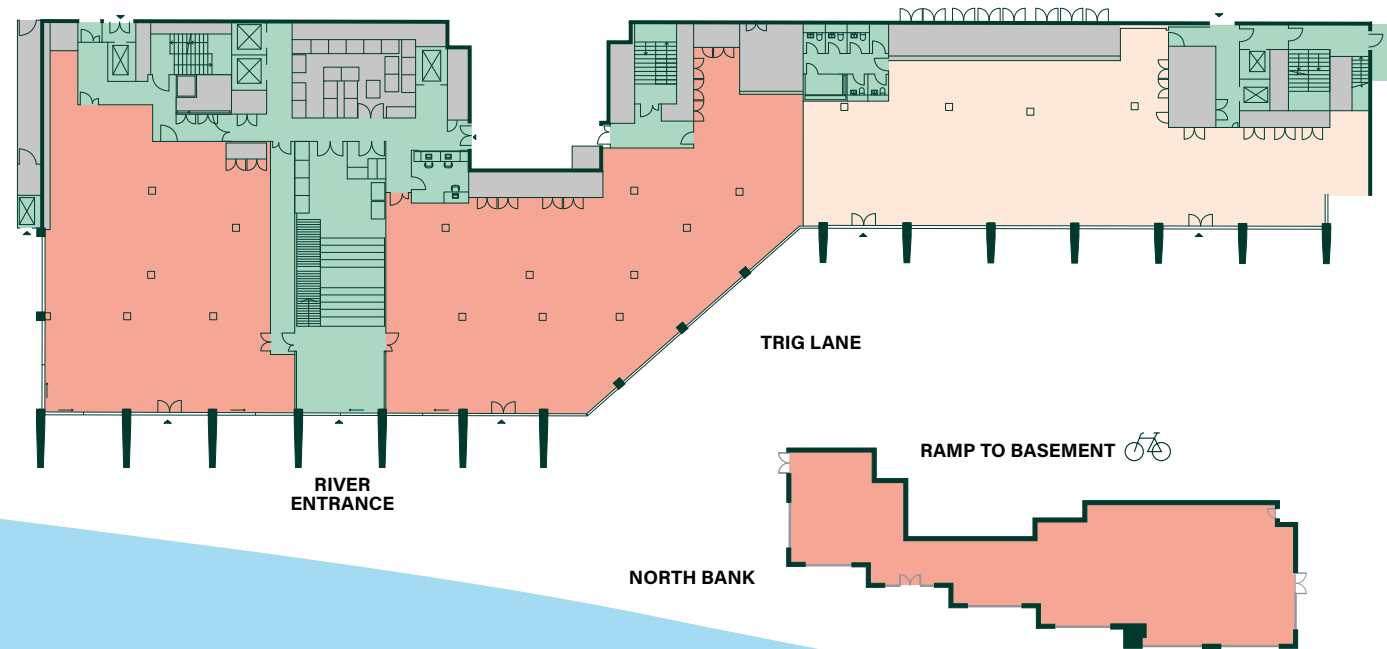
OFFICE - 4,096 SQ FT

RETAIL / OFFICE - 11,831 SQ FT

(INCLUDES THE NORTHBANK AREA)

8,878 SQ FT (WITH-OUT)

- Office
- Retail / Office
- Core
- Plant



BROKEN WHARF

TRIG LANE

RIVER
ENTRANCE

RAMP TO BASEMENT 

NORTH BANK

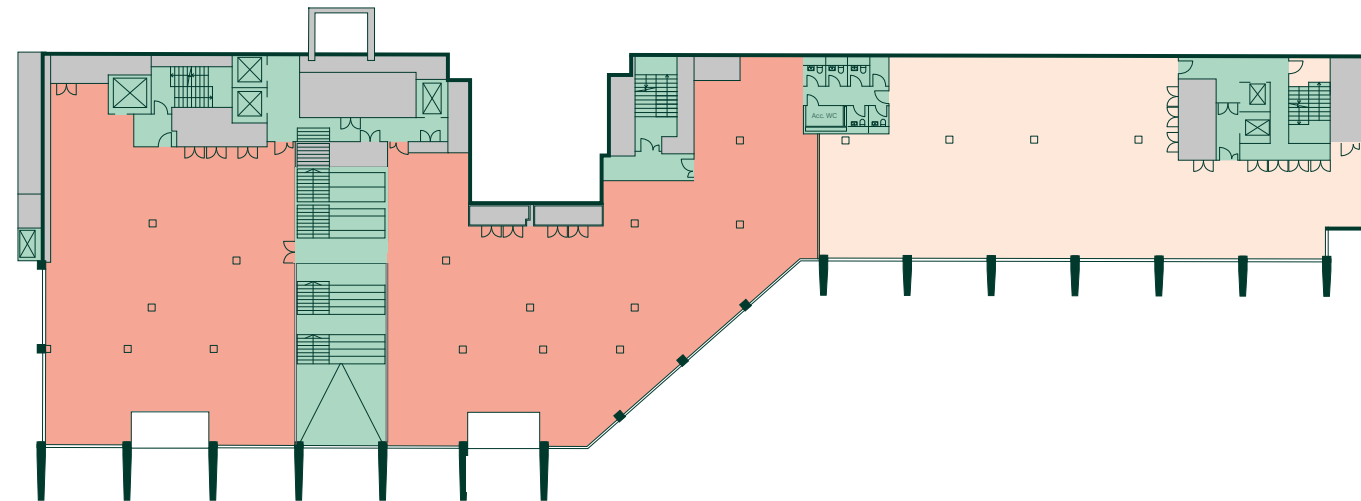
LEVEL 1



13,998 SQ FT | 1,301 SQ M

OFFICE - 4,449 SQ FT

RETAIL / OFFICE - 9,550 SQ FT



- Office
- Retail / Office
- Core
- Plant

BRIDGE LEVEL

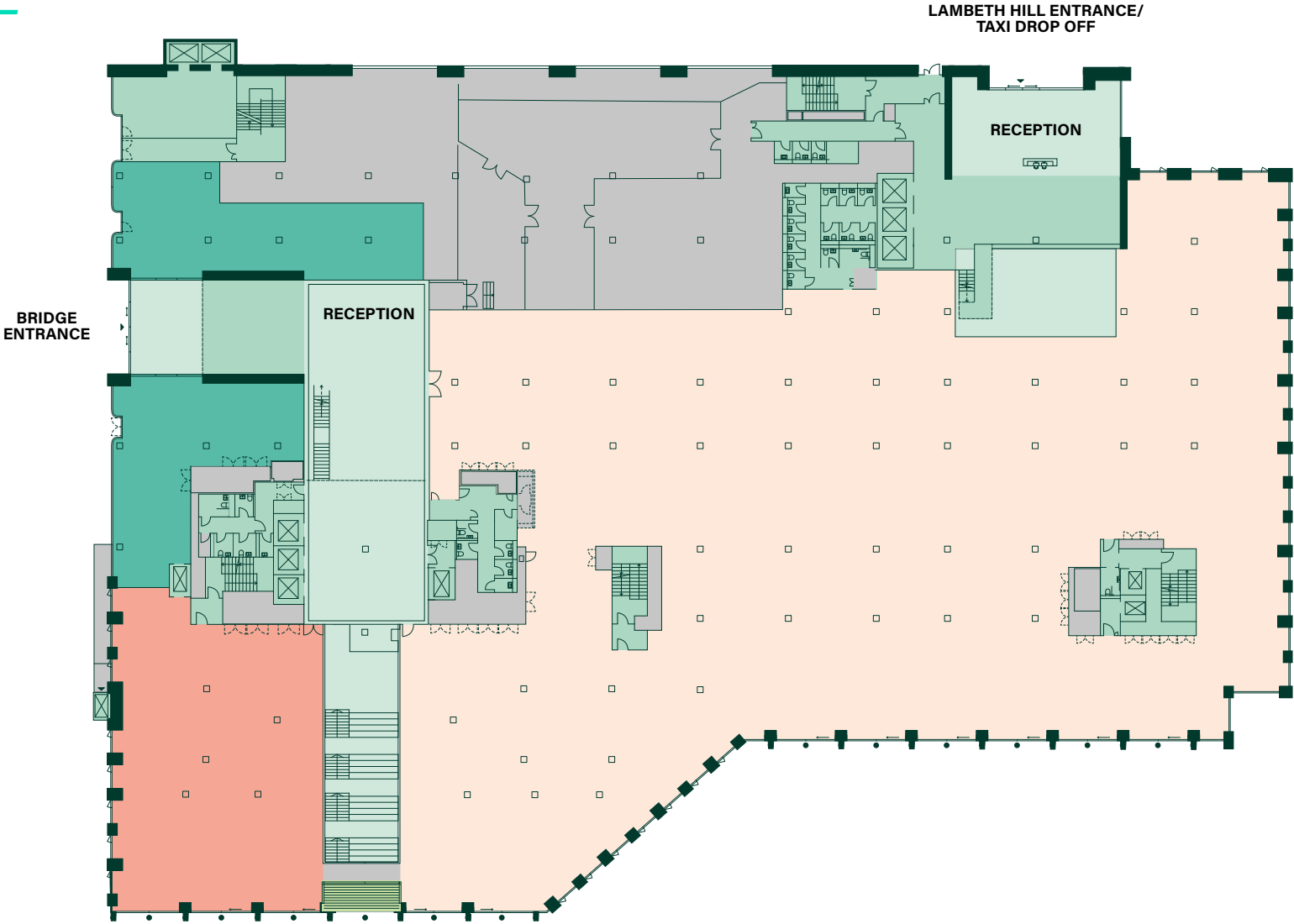


40,551 SQ FT | 3,767 SQ M

OFFICE - 36,578 SQ FT

RETAIL / OFFICE - 3,973 SQ FT

TERRACE - 102 SQ FT



- Office
- Retail
- Core
- Retail / Office
- Balcony
- Plant
- Atrium



LEVEL 3

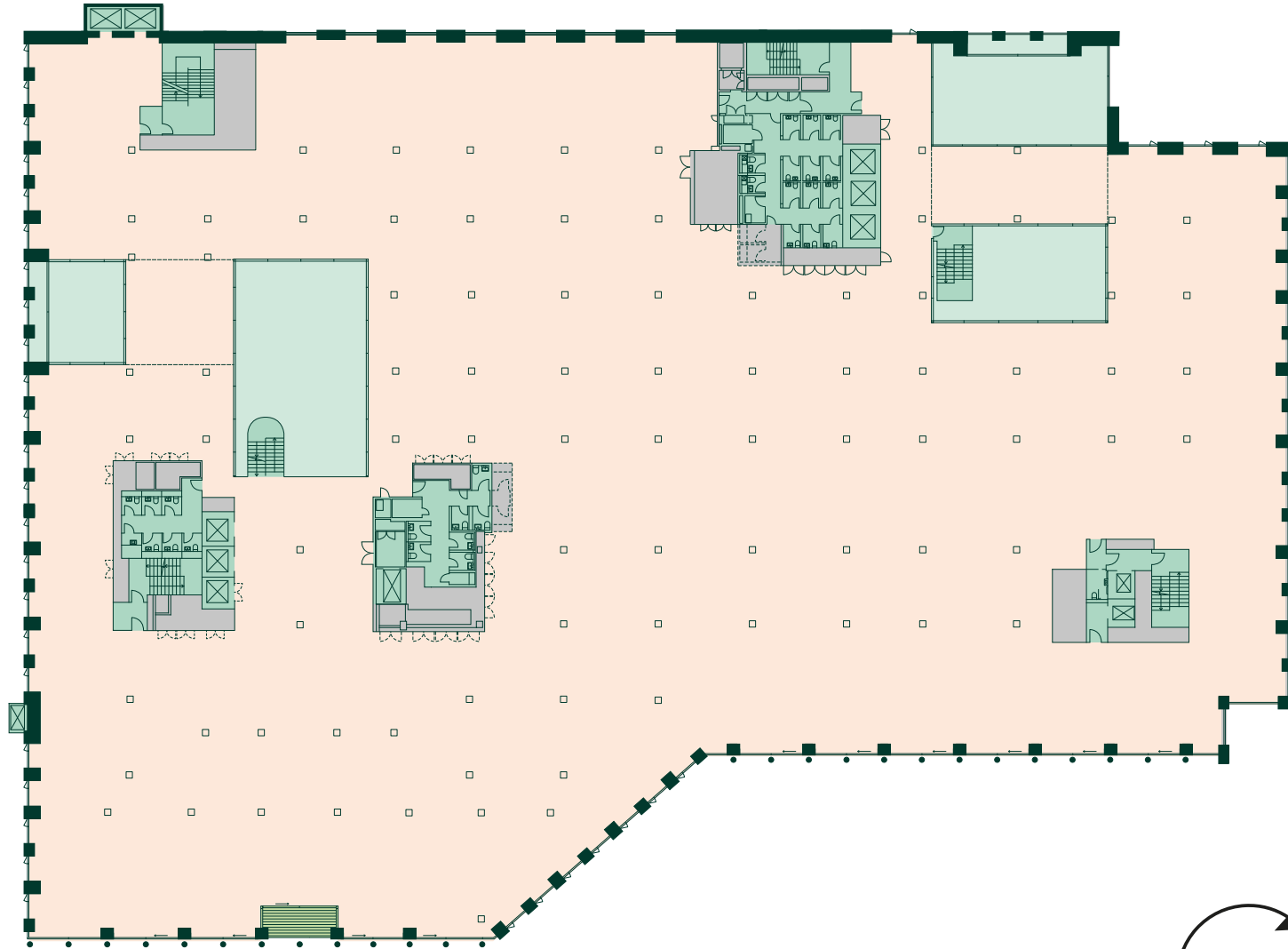


54,007 SQ FT | 5,017 SQ M

OFFICE - 54,007 SQ FT

TERRACE - 102 SQ FT

- Office
- Core
- Balcony
- Plant
- Atrium



LEVEL 4

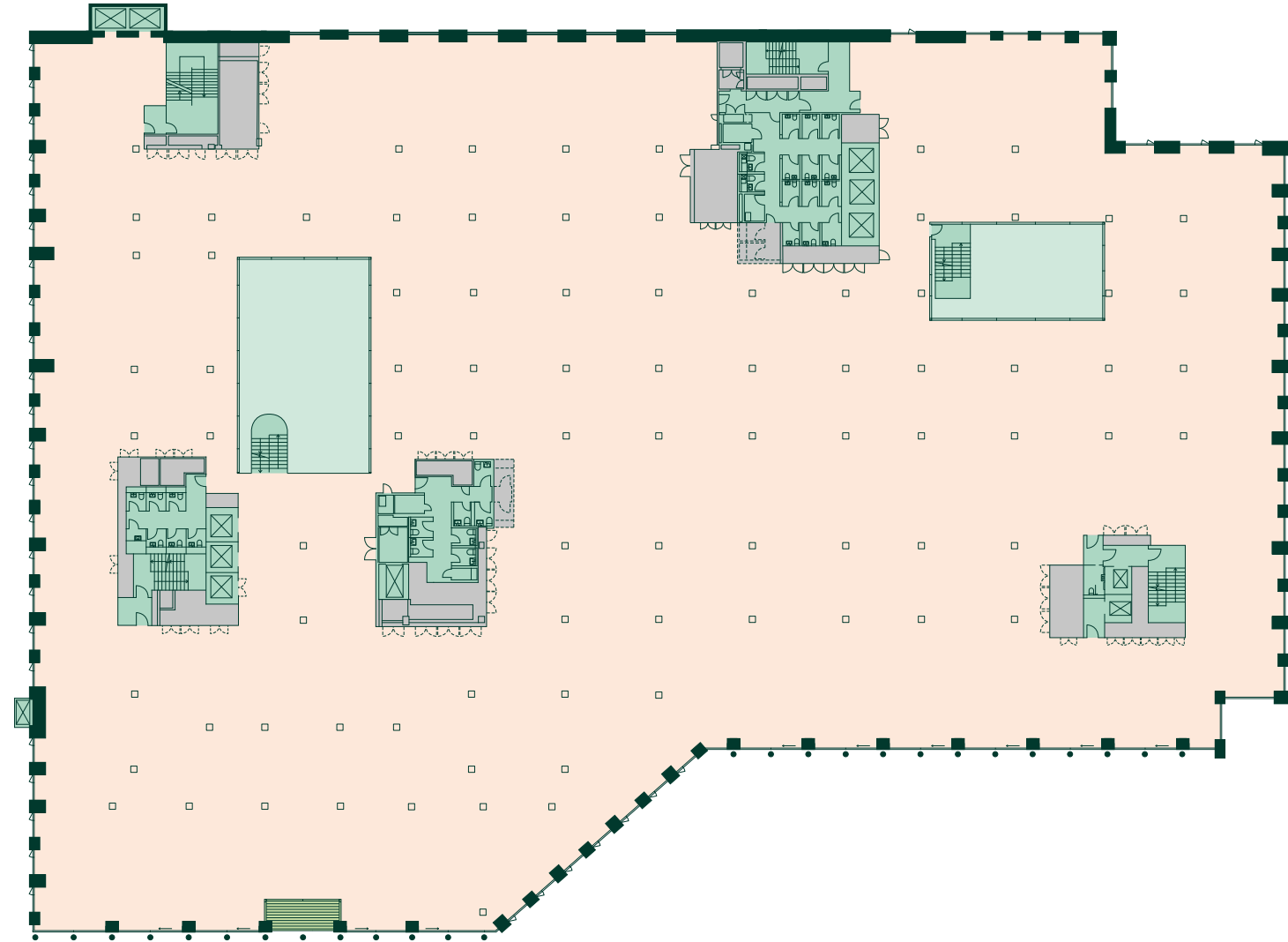


55,934 SQ FT | 5,196 SQ M

OFFICE - 55,934 SQ FT

TERRACE - 102 SQ FT

- Office
- Core
- Balcony
- Plant
- Atrium



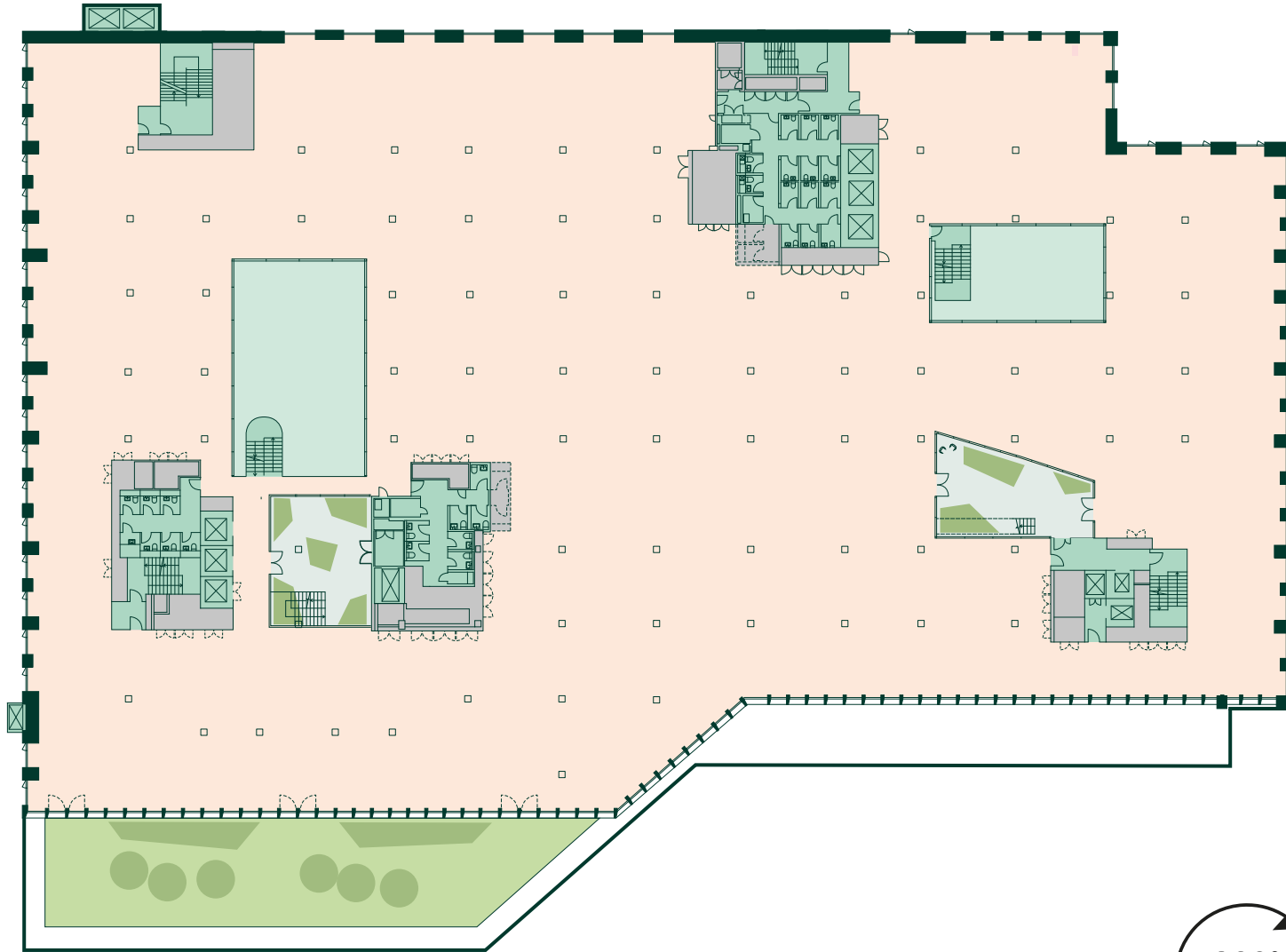
LEVEL 5



47,497 SQ FT | 4,413 SQ M

OFFICE - 47,497 SQ FT

TERRACE - 5,067 SQ FT



- Office
- Core
- Roof Garden
- Plant
- Atrium
- Winter Gardens



LEVEL 6



20,864 SQ FT | 1,938 SQ M

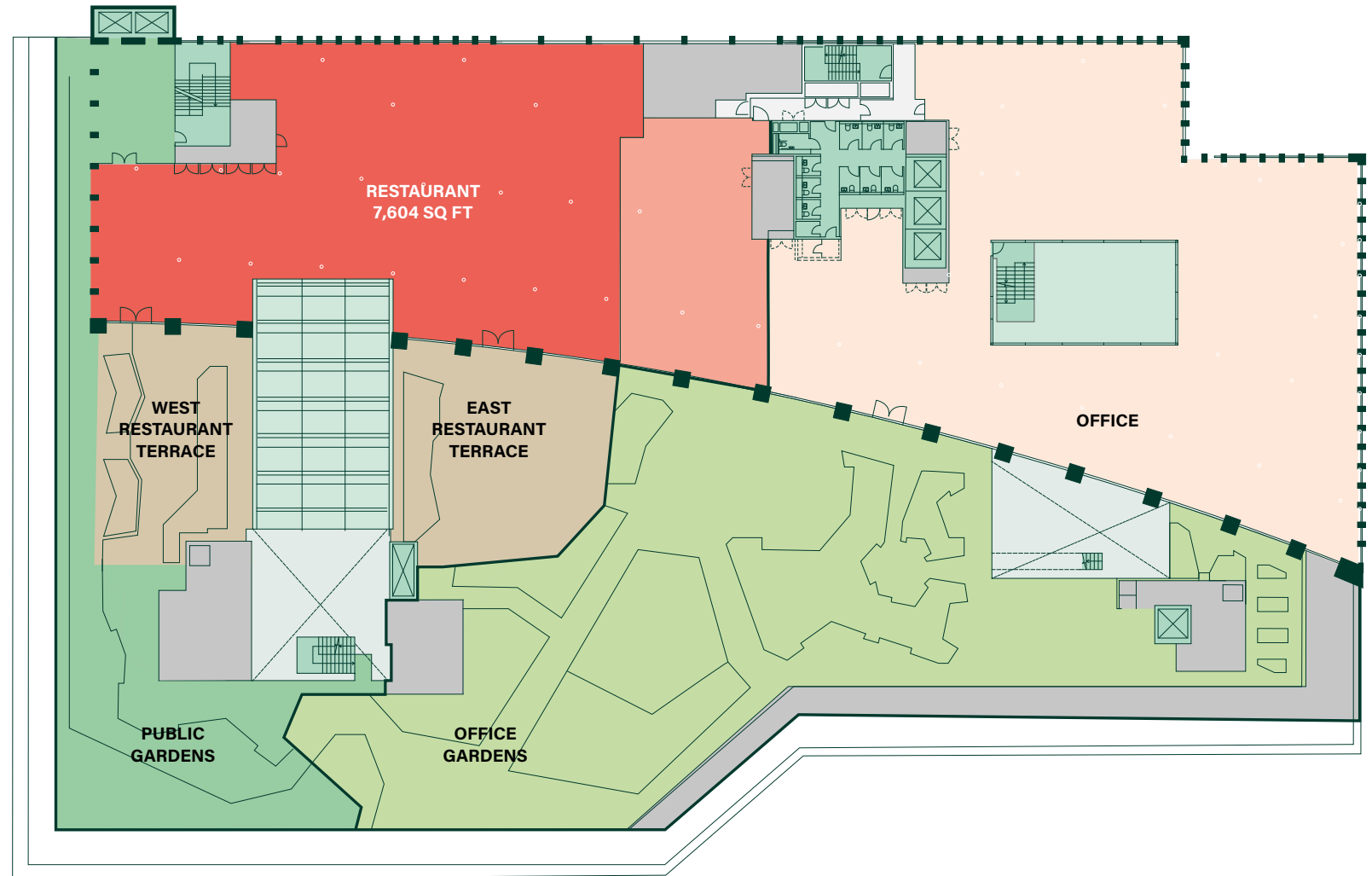
OFFICE - 11,146 SQ FT

RETAIL - 7,604 SQ FT

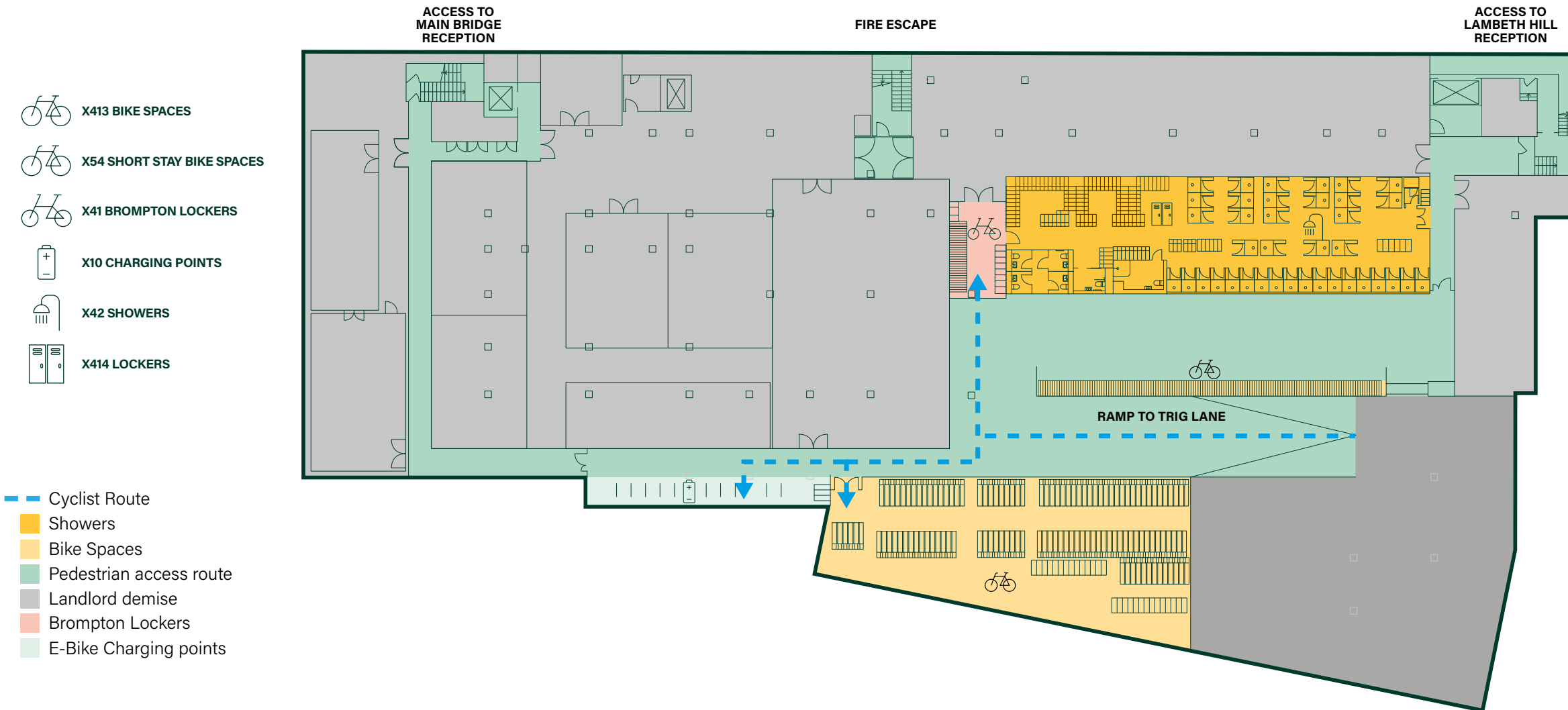
RETAIL / OFFICE - 2,114 SQ FT

TERRACE - 23,541 SQ FT

- Office
- Core
- Roof Garden
- Office Gardens
- Public Gardens
- Restaurant
- Retail / Office
- Public Terrace
- Plant
- Atrium
- Winter Gardens



BASEMENT



LEVEL 3

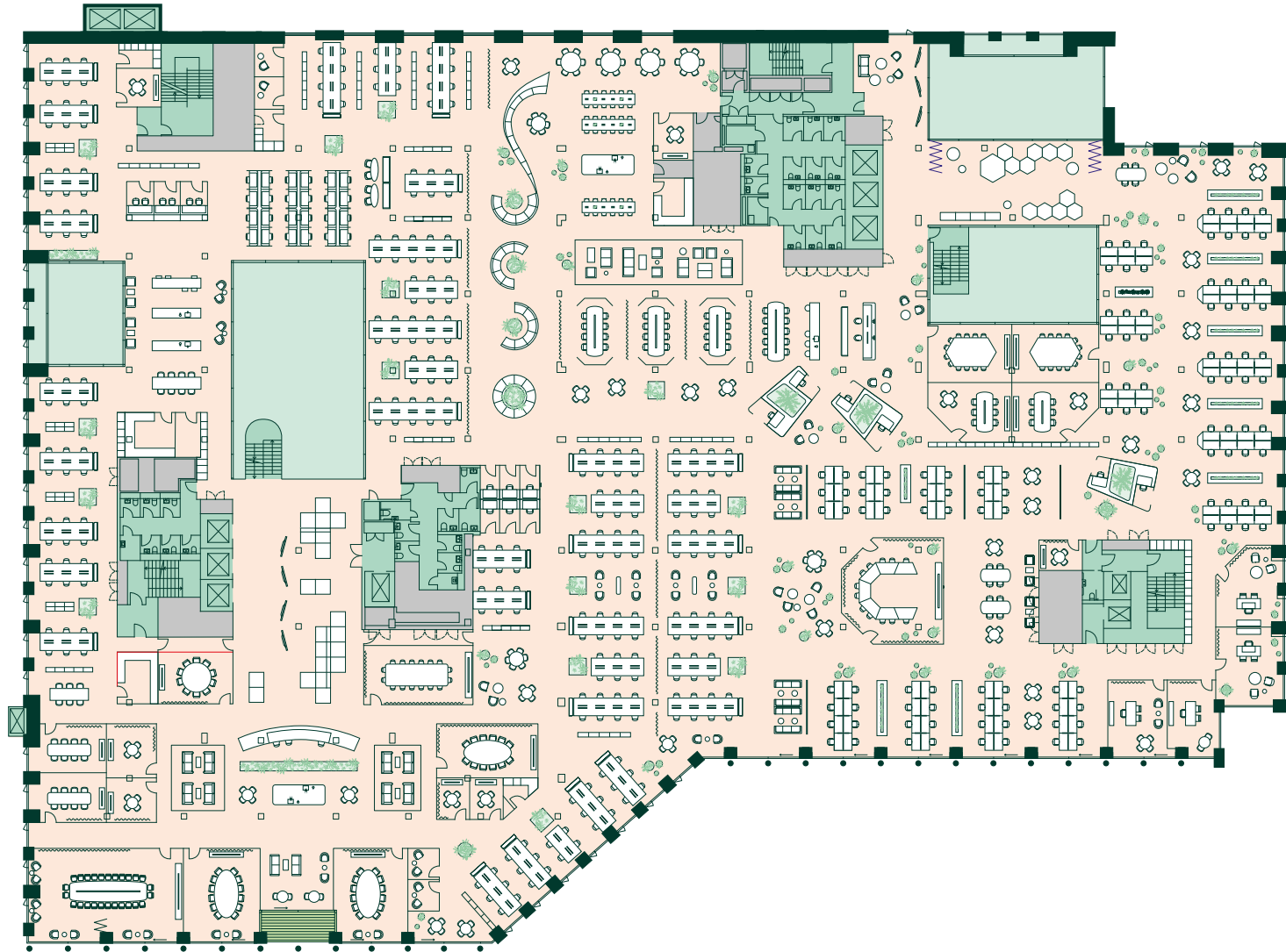


OFFICE - 54,007 SQ FT
TERRACE - 102 SQ FT

- Open Plan Office Places (356)
- 1 pp Offices (4)
- 4 pp Meeting Rooms (7)
- 6 pp Meeting Rooms (2)
- 8 pp Meeting Rooms (2)
- 10 pp Meeting Rooms (1)
- 12 pp Meeting Rooms (5)
- 12 pp Tele-Conferencing Rooms (1)
- 16 pp Meeting Rooms (1)
- 26pp Boardrooms (1)
- Call Booths (17)
- Work Booths (24)
- 8pp Semi Open Meeting Area (3)
- Kitchen (4)
- Breakout Spaces (14)

TOTAL CAPACITY (360)

- Office
- Core
- Balcony
- Plant
- Atrium



INDICATIVE CREATIVE FIT OUT



LEVEL 3

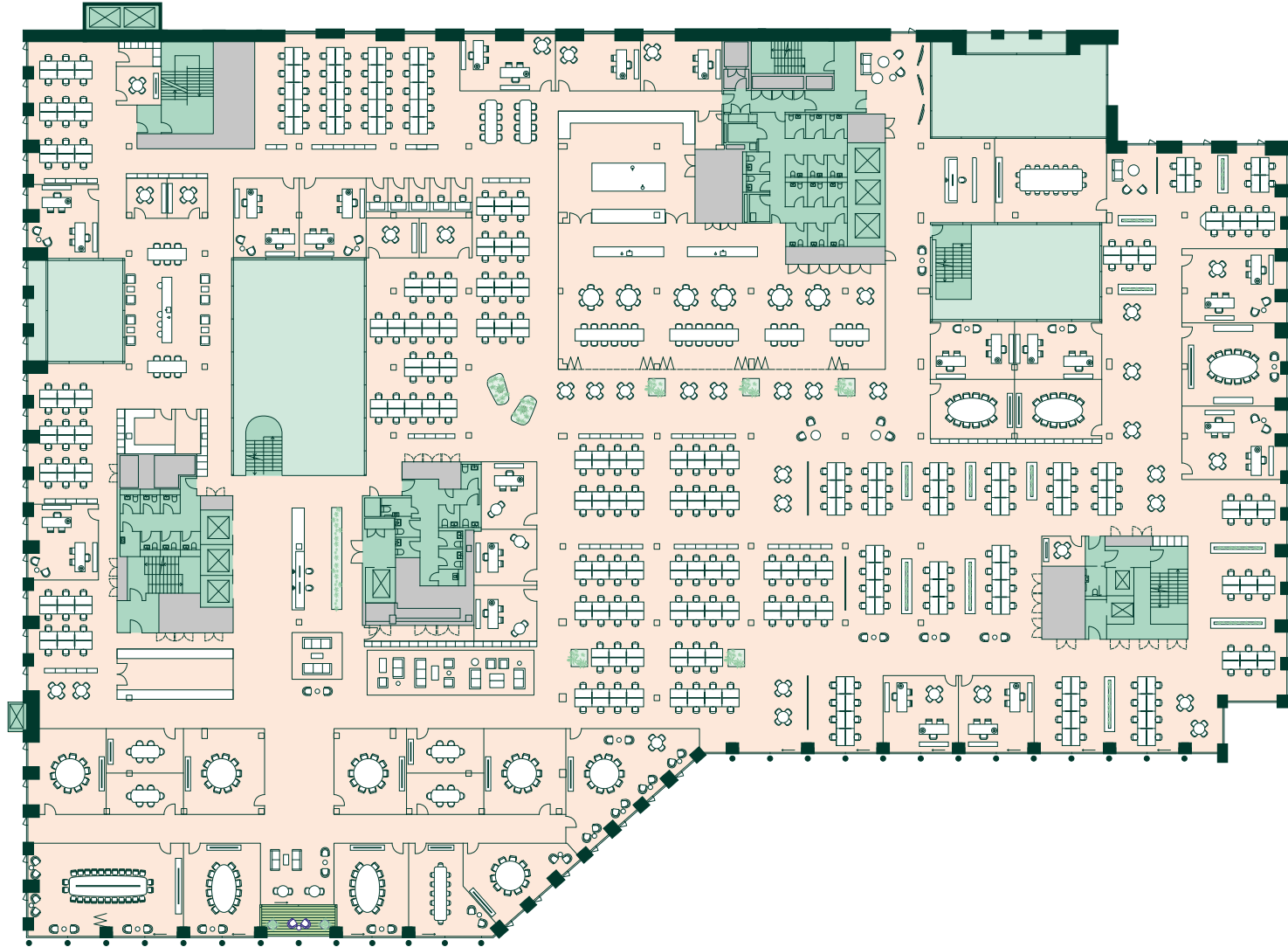


OFFICE - 54,007 SQ FT
TERRACE - 102 SQ FT

- Open Plan Office Places (366)
- 1 pp Offices (5)
- 2 pp Offices (11)
- 4 pp Meeting Rooms (6)
- 6 pp Meeting Rooms (4)
- 10 pp Meeting Rooms (6)
- 12 pp Meeting Rooms (6)
- 16 pp Meeting Rooms (1)
- 26pp Boardrooms (1)
- Call Booths (5)
- Kitchen (2)
- Tea Points (1)
- Cafeteria (places) (108)
- Breakout Spaces (7)

TOTAL CAPACITY (400)

- Office
- Core
- Balcony
- Plant
- Atrium



INDICATIVE CORPORATE FIT OUT



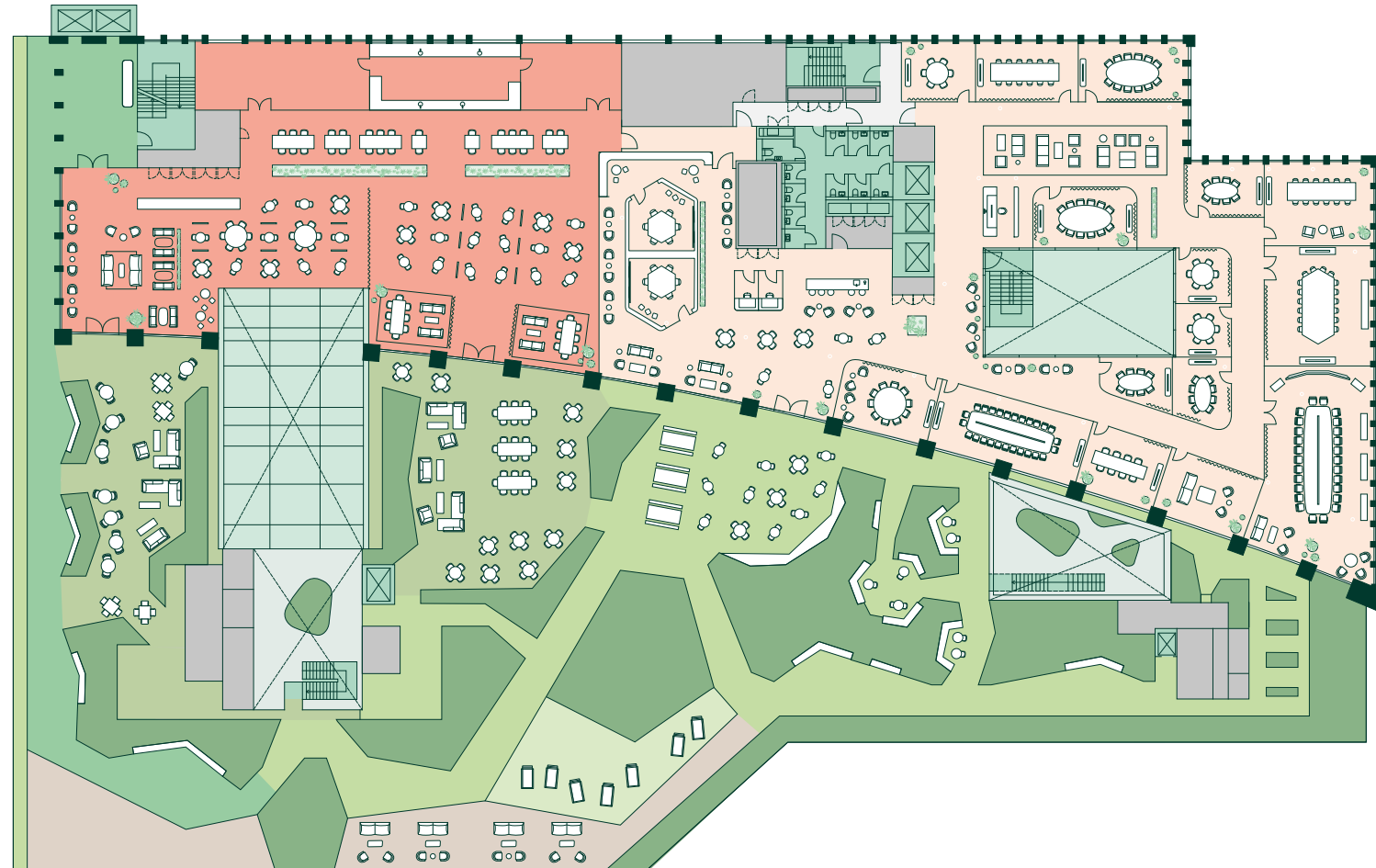
LEVEL 6



OFFICE - 13,260 SQ FT
RESTAURANT - 7604 SQ FT
TERRACE - 23,541 SQ FT

- 1pp Offices (1)
- 6pp Meeting Rooms (5)
- 8pp Meeting Rooms (4)
- 10pp Meeting Rooms (1)
- 12pp Meeting Rooms (4)
- 16pp Meeting Rooms (1)
- 26pp Meeting Rooms (2)
- Call Rooms (2)
- Kitchens (1)
- Cafe / Tea Points (1)
- Breakout Spaces / Waiting Areas (2)

- Office
- Core
- Roof Garden
- Office Gardens
- Plant
- Atrium
- Winter Gardens
- Restaurant (Internal Seating) (130)
- Restaurant (External Seating) (100)



INDICATIVE MEETING ROOM FIT OUT

GET IN TOUCH

CBRE

David Perowne
david.perowne@cbre.com
+44 (0) 7739 814 720

Tom Meijer
tom.meijer@cbre.com
+44 (0) 7540 595 379

Hannah Grint
hannah.grint@cbre.com
+44 (0) 7545 868 543

RX LONDON

Frankie Warner Lacey
frankie.warnerlacey@rx.london
+44 (0) 7775 895 661

Dan Burn
dan.burn@rx.london
+44 (0) 7515 607 011

Ed Betts
ed.betts@rx.london
+44 (0) 7771 513 169

A DEVELOPMENT BY



BELTANE

AG & CO ANGELO,
GORDON
& CO.

