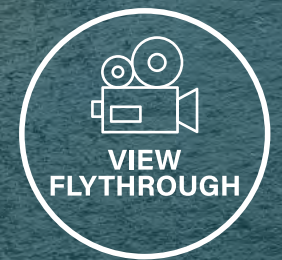


250,000 SQ FT OF
SUSTAINABLE, **NEXT**
GENERATION, RIVERSIDE
WORKSPACE WITH
SPECTACULAR TERRACES
AND **OUTSTANDING**
ON-SITE AMENITIES.
ARRIVING **SUMMER 2024.**

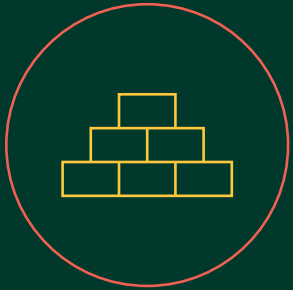




An indicative aerial view of One Millennium Bridge.



ENVIRONMENTAL CREDENTIALS



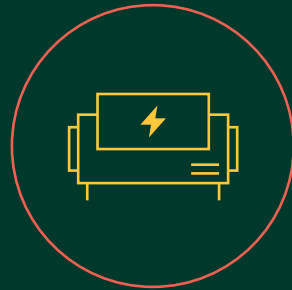
69%
retained structure



95% of demolition waste
diverted from landfill



Water consumption
reduced by 40%



100% electric
building



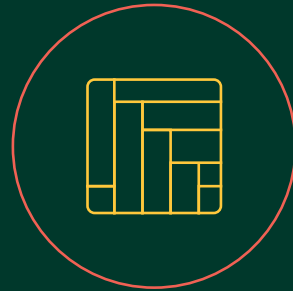
Heat recovery thermal
storage system



Openable
windows



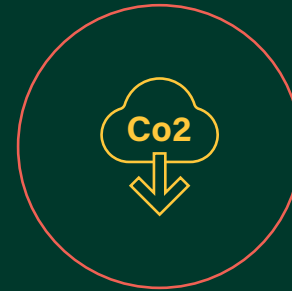
Regenerative
lifts



100% responsibly
sourced timber and
timber-based products



BREEAM
Excellent targeted



29 years ahead of London's
Net Zero Carbon goal



EPC A in partnership
with occupier

LONDON'S
LATEST
**RIVERSIDE
LANDMARK**



AT THE CENTRE OF LONDON

- St Paul's 5 mins
- St Paul's Cathedral 5 mins
- Bank 8 mins
- Mansion House 4 mins
- Blackfriars 4 mins
- Blackfriars Pier 4 mins
- Cannon St 5 mins
- Uber Boat Thames Clippers Bankside Pier 6 mins
- Shakespeare's Globe 6 mins
- London Bridge Station 14 mins
- Borough Market 11 mins
- Tate Modern 5 mins
- Waterloo 15 mins

● ONE MILLENNIUM BRIDGE

All travel times are taken from TFL and are door-to-door including walking/tube travel.

EXCEPTIONALLY CONNECTED

WALKING

Mansion House 4 Mins



Blackfriars 4 mins



St Paul's 5 Mins



Cannon St 5 Mins



Bank 8 Mins



London Bridge 14 Mins



Waterloo 15 Mins



Farringdon 16 Mins



CYCLING

London Bridge 5 Mins



Farringdon 5 Mins



Waterloo 7 Mins



Liverpool St 8 Mins



KEY TRAVEL HUBS

Victoria	14 mins
Euston	20 mins
Canary Wharf	21 mins
King's Cross/St Pancras	23 mins
Paddington	27 mins

AIRPORTS

London City	34 mins
Gatwick	43 mins
Heathrow	50 mins

Circle	Metropolitan	Picadilly	DLR
District	Jubilee	Victoria	Elizabeth
Hammersmith & City	Northern	Waterloo & City	Thameslink
Central	Bakerloo	Overground	National Rail

Optimal travel times taken from TFL and include walking, cycling and/or tube travel.

A PLETHORA OF BARS AND RESTAURANTS

A favourite for foodies. Take your taste buds on a journey through world-class restaurants, artisan cafés and eclectic bars. All within a stone's throw of One Millennium Bridge, but if you don't fancy the walk, head up to your exceptional roof terrace restaurant or on site.



One New Change



Bread Street Kitchen



Borough Market



Ivy Asia

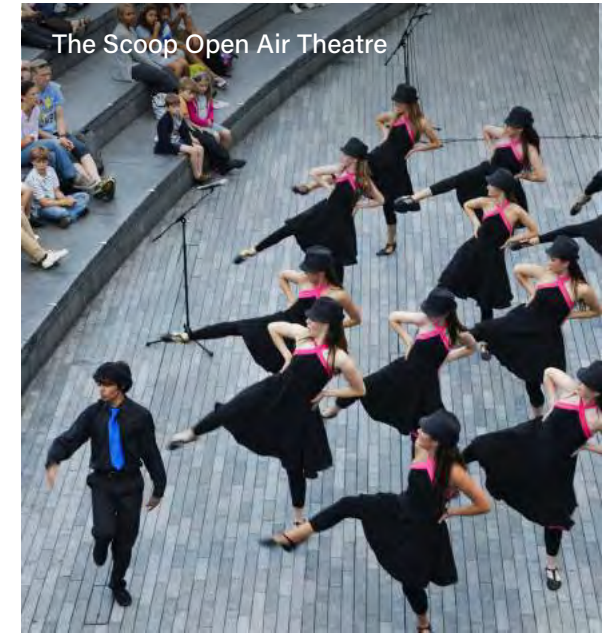
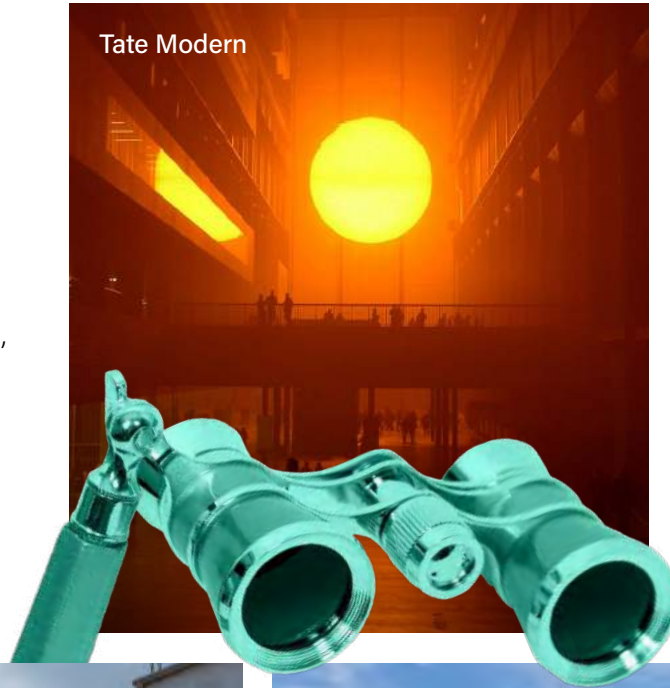


Vinoteca



CULTURE ON YOUR DOORSTEP

Immerse yourself in London's cultural heartland, where curators, innovators and makers meet.



35,000 SQ FT
DIVERSE RETAIL



OUTSTANDING ON-SITE AMENITIES

One Millennium Bridge boasts a diverse array of on-site amenities, including an exceptional rooftop.



AN ELEVATED ARRIVAL EXPERIENCE



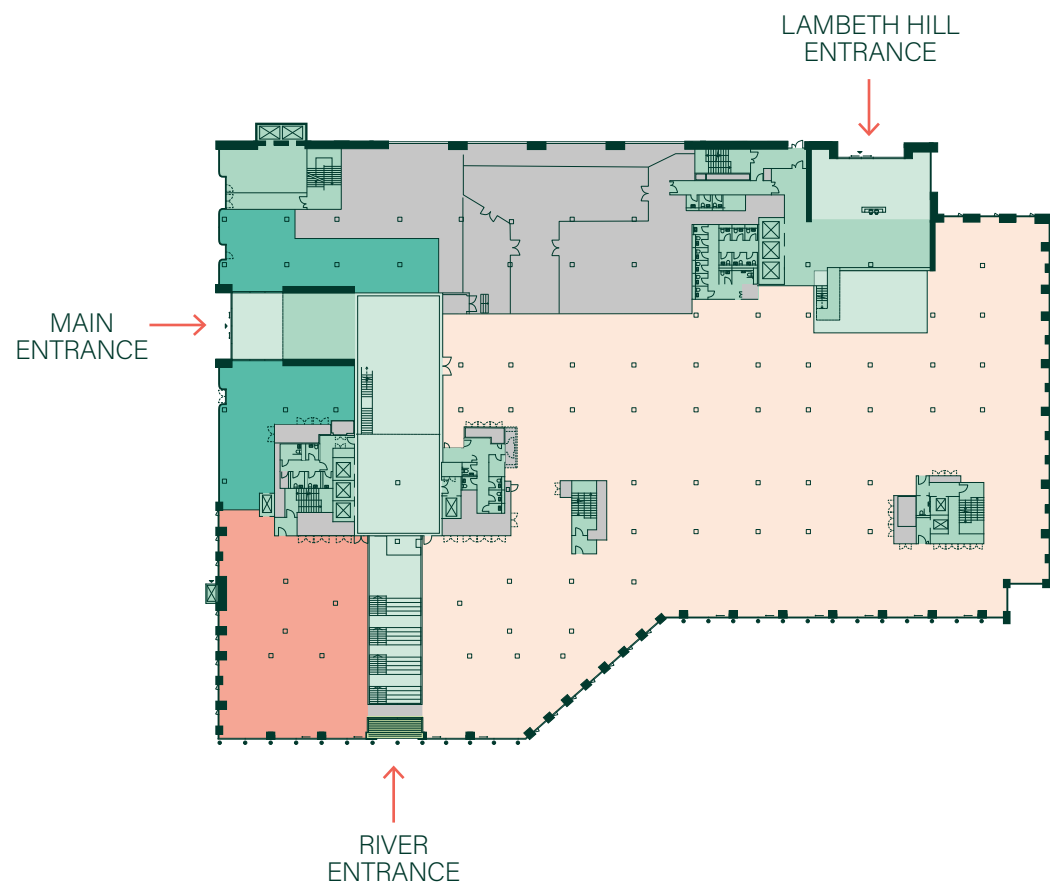
ONE
MILLENNIUM
BRIDGE

BREW

NESTLED BETWEEN ICONS



THREE ENTRANCES



LAMBETH HILL ENTRANCE



BRIDGE ENTRANCE



RIVER ENTRANCE





Indicative view from the river-level entrance of the bleacher seating.



360°
VIEWS

A stunning arrival experience with an extensive reception flooded with natural light via a full-height atrium.



An indicative view of a creative fit-out on Level 3.

RIVER VIEWS ON **EVERY FLOOR**

Exceptional, riverside workspace at the head of Millennium Bridge with outstanding panoramic views and looking onto the Southbank's thriving cultural hub.



An indicative CGI of the riverside view from Level 3.



An indicative view of a creative fit-out on Level 5.



An indicative view of a creative fit-out on Level 5.



An indicative view of Level 5 terrace.

ONE OF THE LARGEST ROOFTOP GARDENS **IN LONDON**





An indicative view of Level 6 roof terrace in the day.

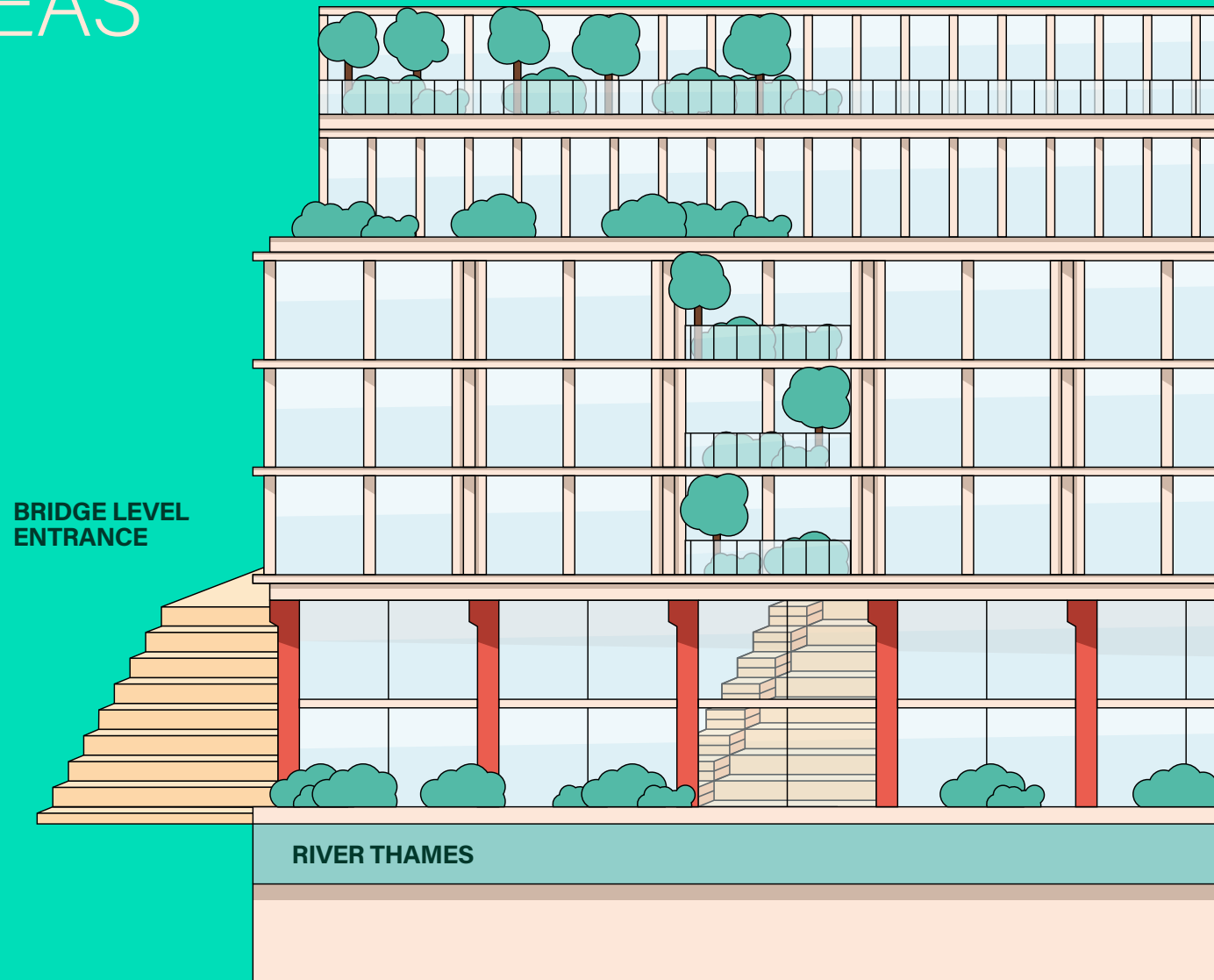


An indicative view of Level 6 Roof Terrace at dusk.



An indicative view of Level 6 Roof Terrace.

SCHEDULE OF AREAS

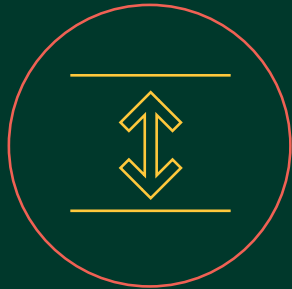


	OFFICE	RETAIL/ OFFICE	TERRACE
LEVEL 06	11,146 sq ft 1,036 sq m	9,718 sq ft 903 sq m	23,541 sq ft 2,187 sq m
LEVEL 05	47,497 sq ft 4,413 sq m		5,067 sq ft 471 sq m
LEVEL 04	55,934 sq ft 5,196 sq m		102 sq ft 9 sq m
LEVEL 03	54,007 sq ft 5,017 sq m		102 sq ft 9 sq m
BRIDGE LEVEL	36,578 sq ft 3,398 sq m	3,973 sq ft 369 sq m	102 sq ft 9 sq m
LEVEL 01	4,449 sq ft 413 sq m	9,550 sq ft 887 sq m	
RIVER LEVEL	4,096 sq ft 381 sq m	11,831 sq ft 1,099 sq m	
TOTAL	213,707 sq ft 19,854 sq m	35,072 sq ft 3,258 sq m	28,914 sq ft 2,686 sq m
BASEMENT	467 Bike Spaces	42 Showers	414 Lockers

SUMMARY SPECIFICATION



1:8 occupancy ratio



2.8m floor to ceiling height



Dual power from two separate substations



Low energy innovation



28,914 sq ft of outdoor space



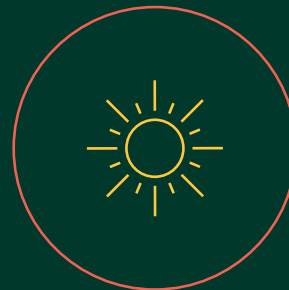
New riverside walkway



3 dedicated office entrances



467 Bicycle spaces



Large light-filled atrium with feature staircase



WiFi throughout common areas



WiredScore Platinum

RIVER LEVEL



15,926 SQ FT | 1,480 SQ M

OFFICE - 4,096 SQ FT

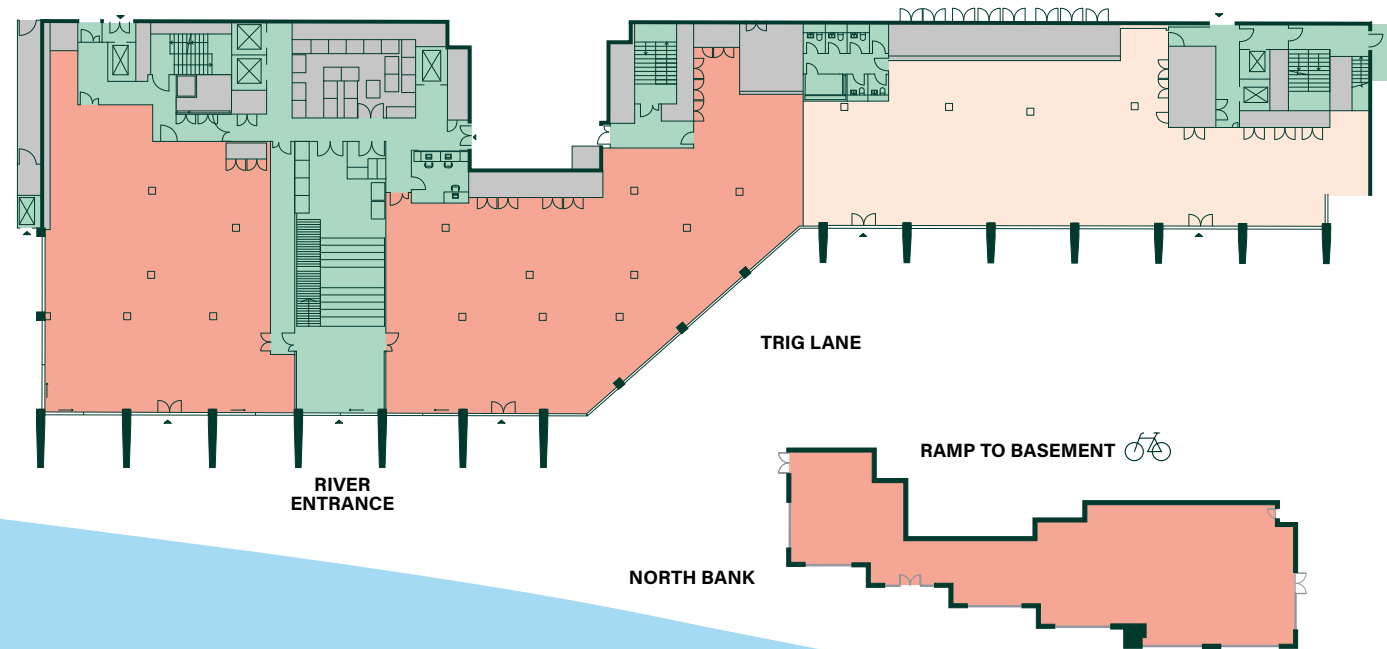
RETAIL/OFFICE - 11,831 SQ FT *

RETAIL/OFFICE - 8,878 SQ FT **

* INCLUDING NORTHBANK AREA

** EXCLUDING NORTHBANK AREA

- Office
- Retail/Office
- Core
- Plant



BROKEN WHARF

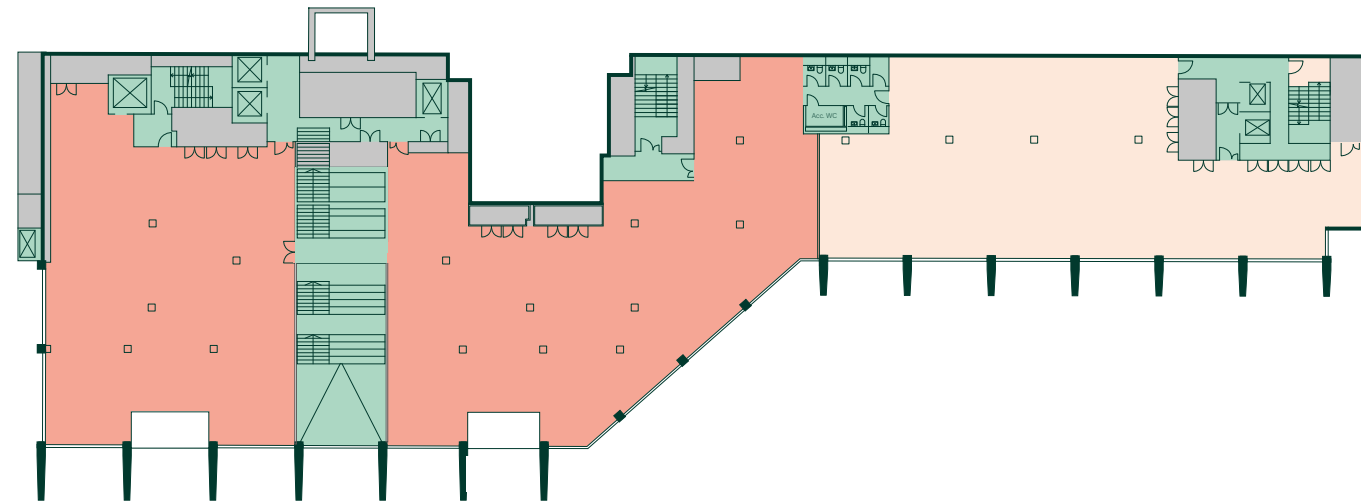
LEVEL 1



13,998 SQ FT | 1,301 SQ M

OFFICE - 4,449 SQ FT

RETAIL/OFFICE - 9,550 SQ FT



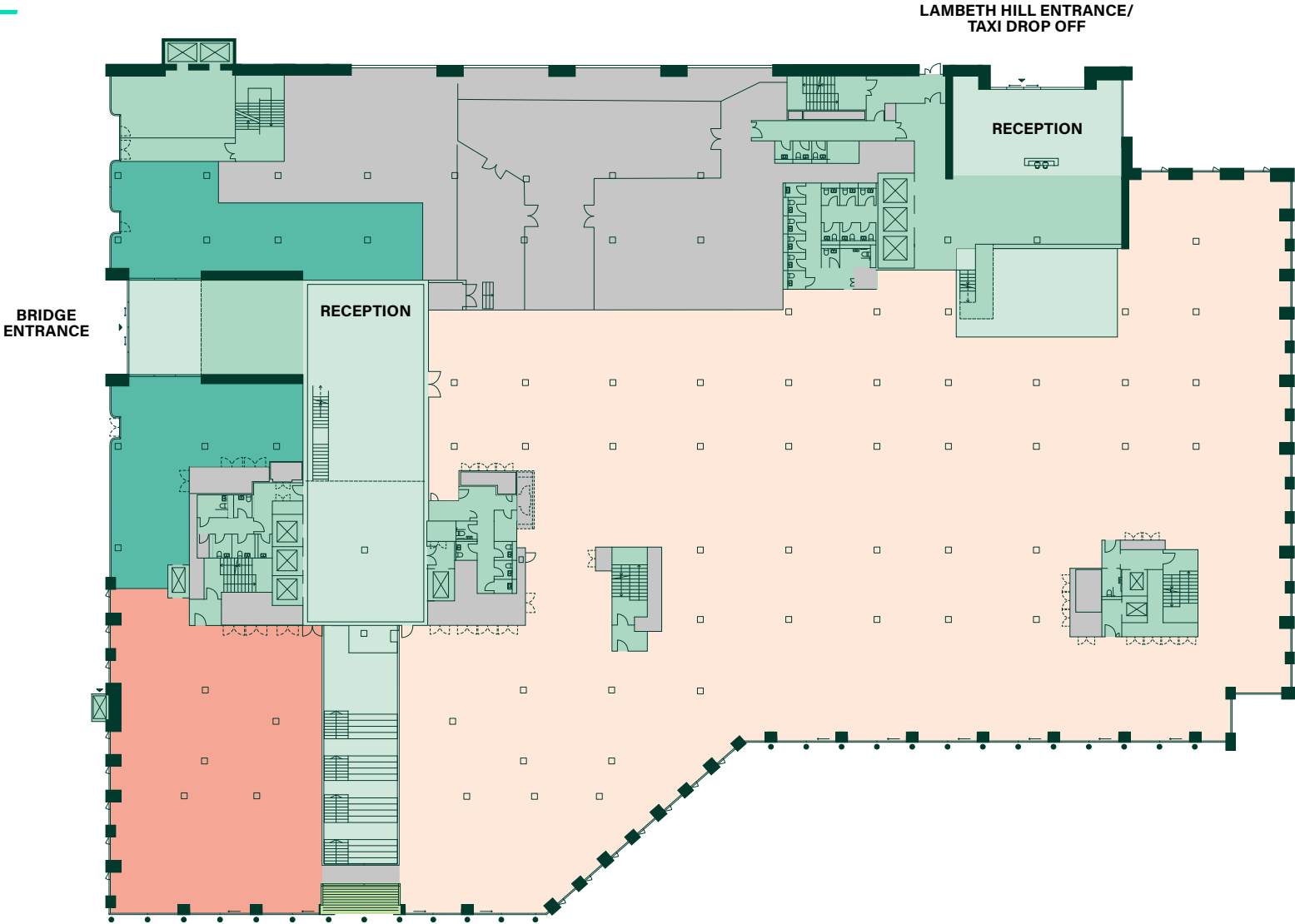
- Office
- Retail/Office
- Core
- Plant

BRIDGE LEVEL



40,551 SQ FT | 3,767 SQ M

OFFICE - 36,578 SQ FT
RETAIL/OFFICE - 3,973 SQ FT
TERRACE - 102 SQ FT



- Office
- Retail
- Core
- Retail/Office
- Balcony
- Plant
- Atrium



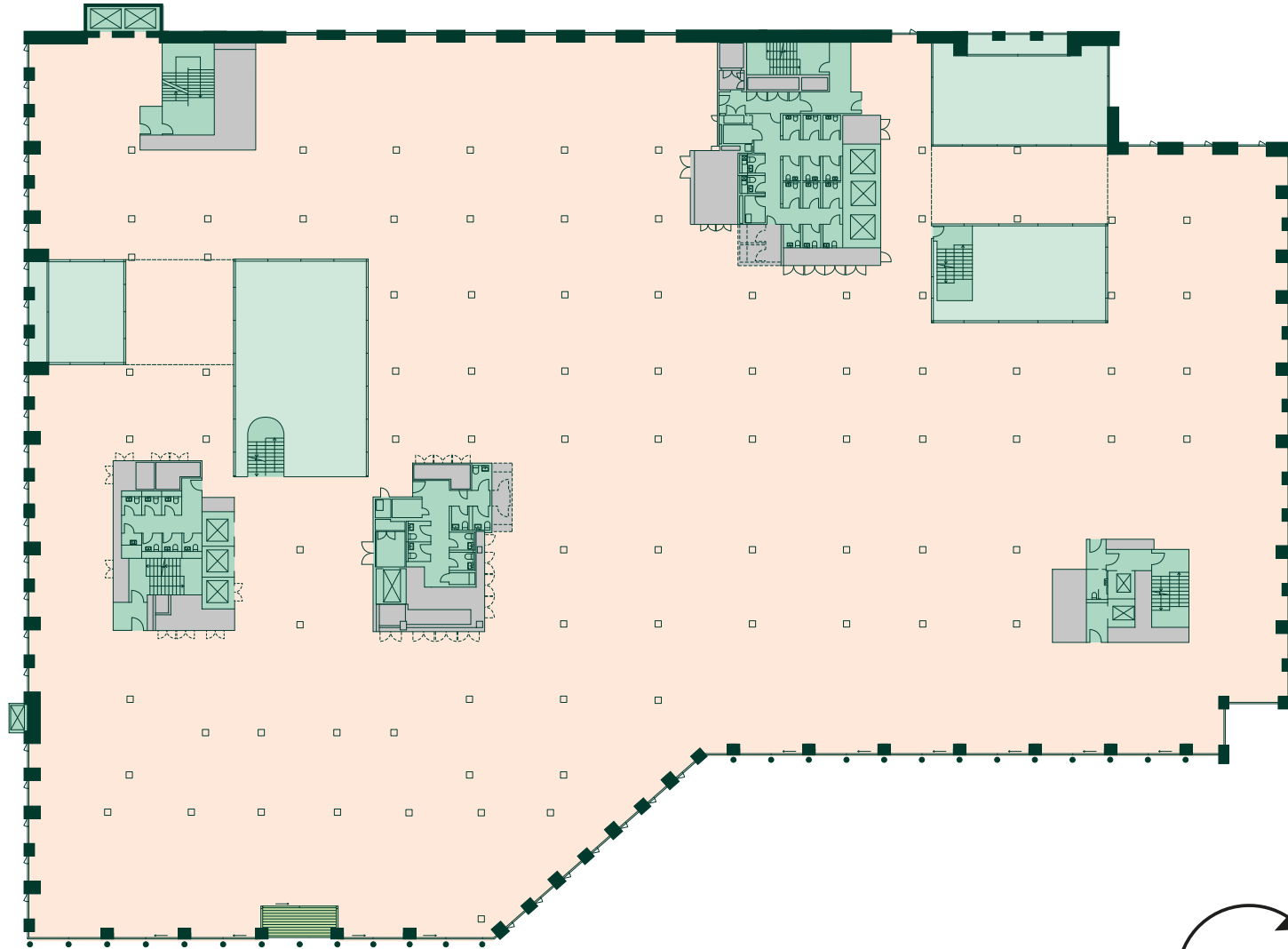
LEVEL 3



54,007 SQ FT | 5,017 SQ M

OFFICE - 54,007 SQ FT

TERRACE - 102 SQ FT



- Office
- Core
- Balcony
- Plant
- Atrium



LEVEL 4

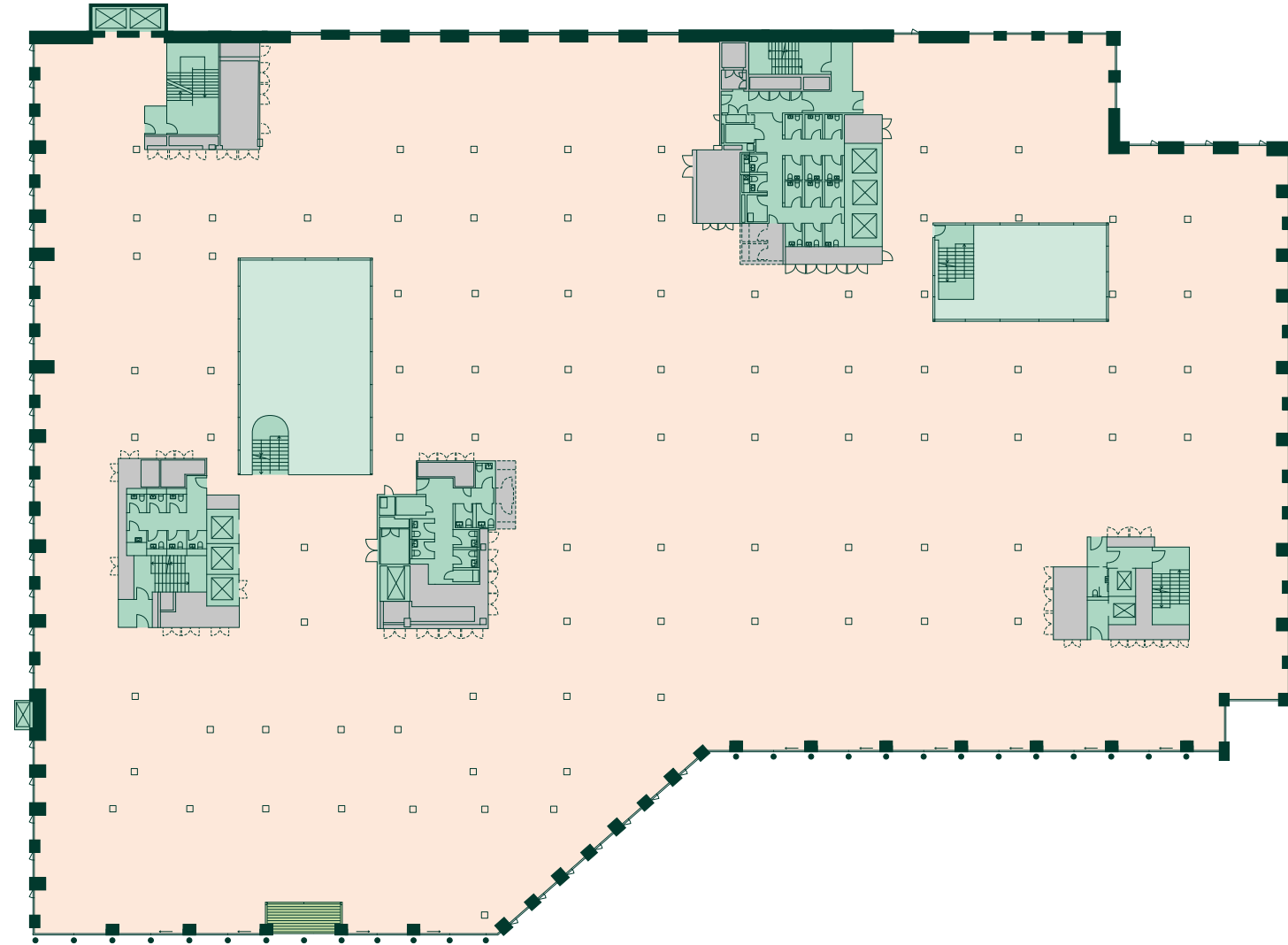


55,934 SQ FT | 5,196 SQ M

OFFICE - 55,934 SQ FT

TERRACE - 102 SQ FT

- Office
- Core
- Balcony
- Plant
- Atrium



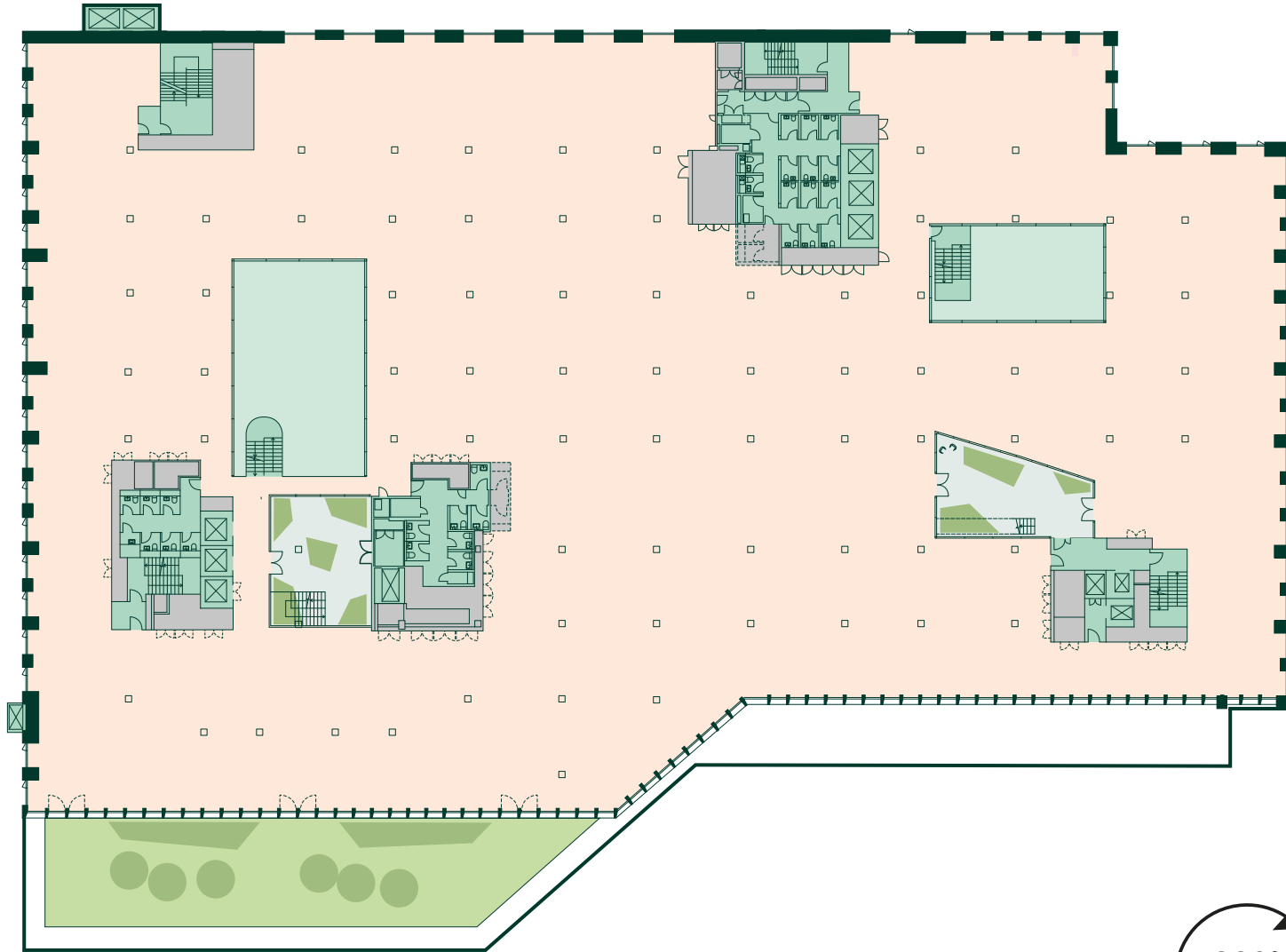
LEVEL 5



47,497 SQ FT | 4,413 SQ M

OFFICE - 47,497 SQ FT

TERRACE - 5,067 SQ FT



- Office
- Core
- Roof Garden
- Plant
- Atrium
- Winter Gardens



LEVEL 6



20,864 SQ FT | 1,938 SQ M

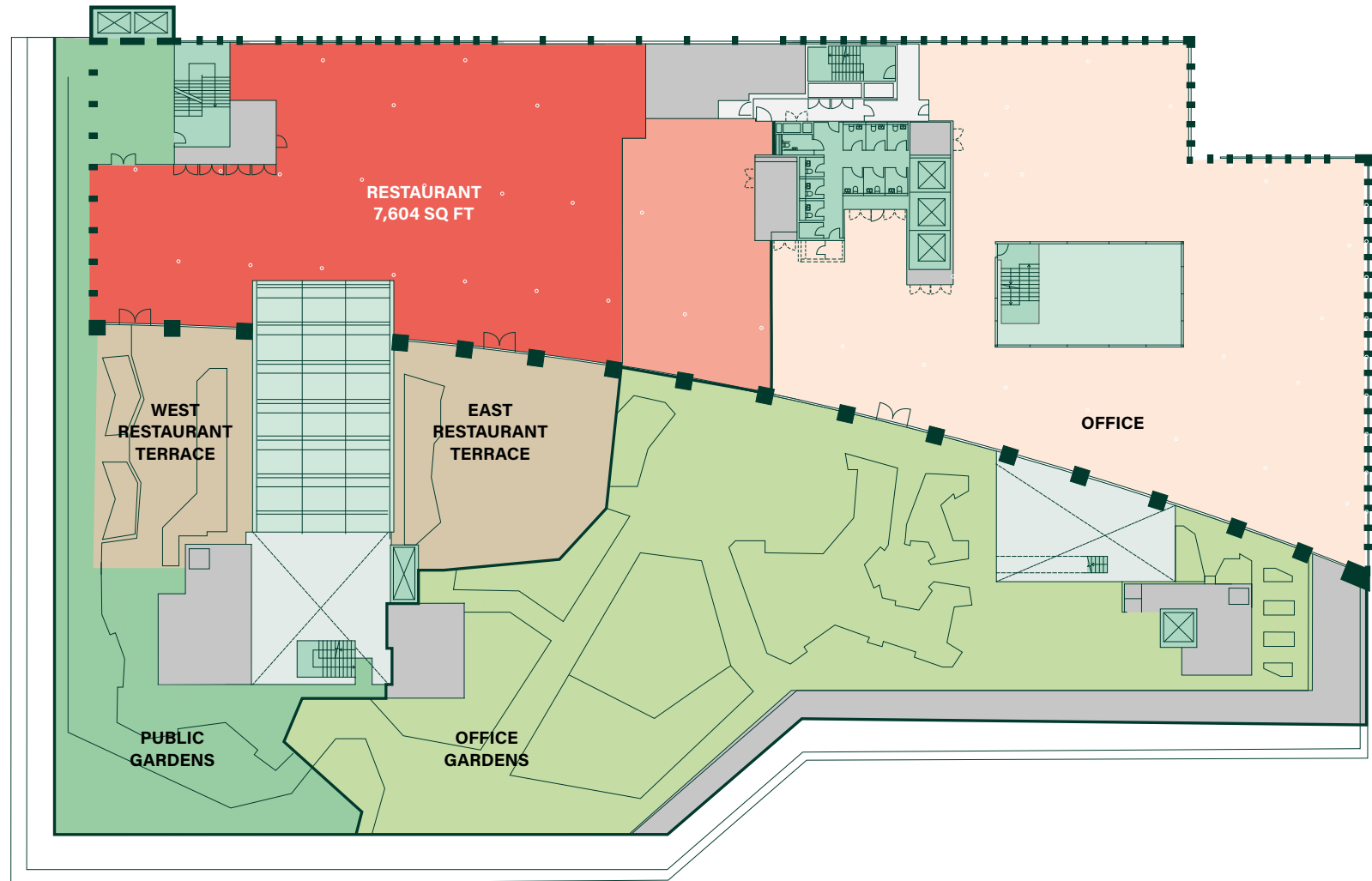
OFFICE - 11,146 SQ FT

RETAIL - 7,604 SQ FT

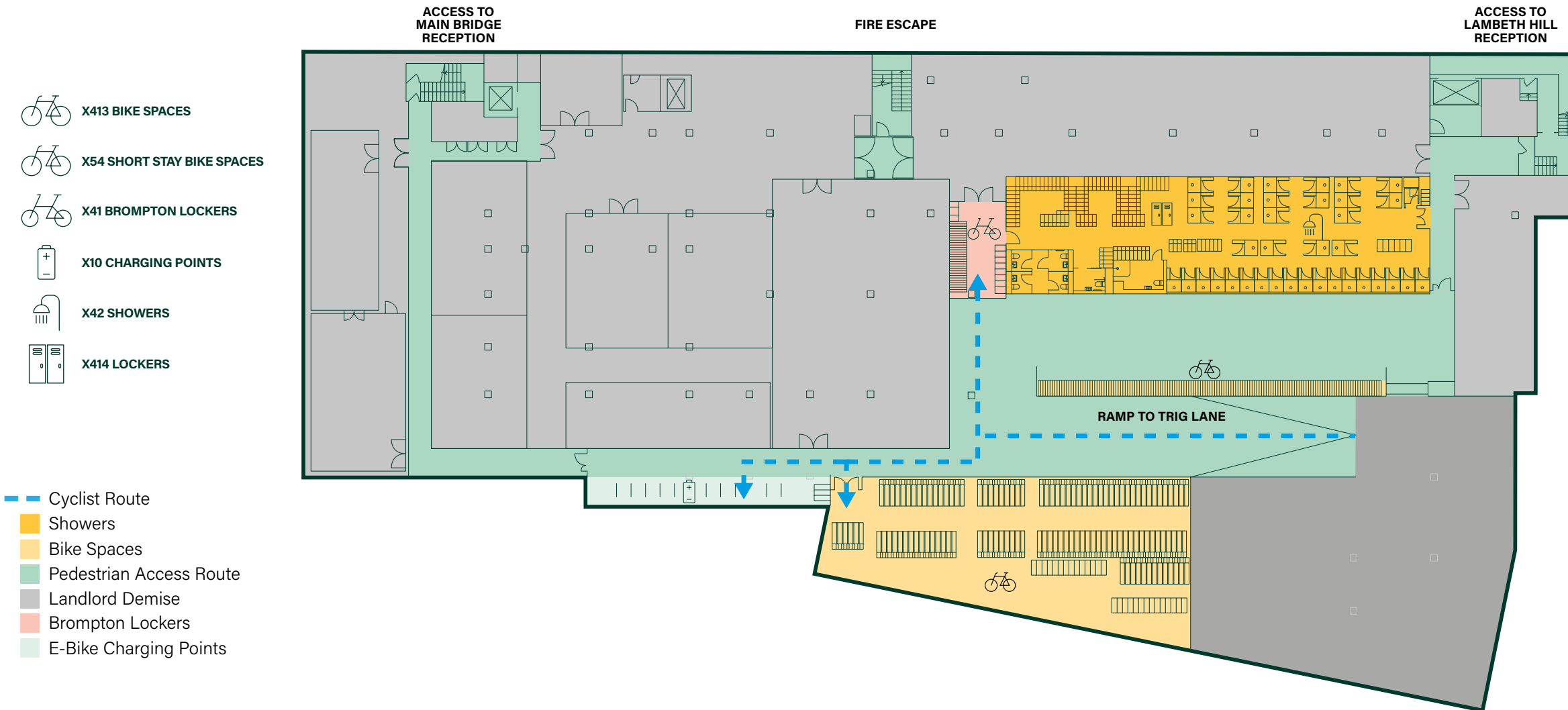
RETAIL/OFFICE - 2,114 SQ FT

TERRACE - 23,541 SQ FT

- Office
- Core
- Roof Garden
- Office Gardens
- Public Gardens
- Restaurant
- Retail/Office
- Public Terrace
- Plant
- Atrium
- Winter Gardens



BASEMENT



LEVEL 3

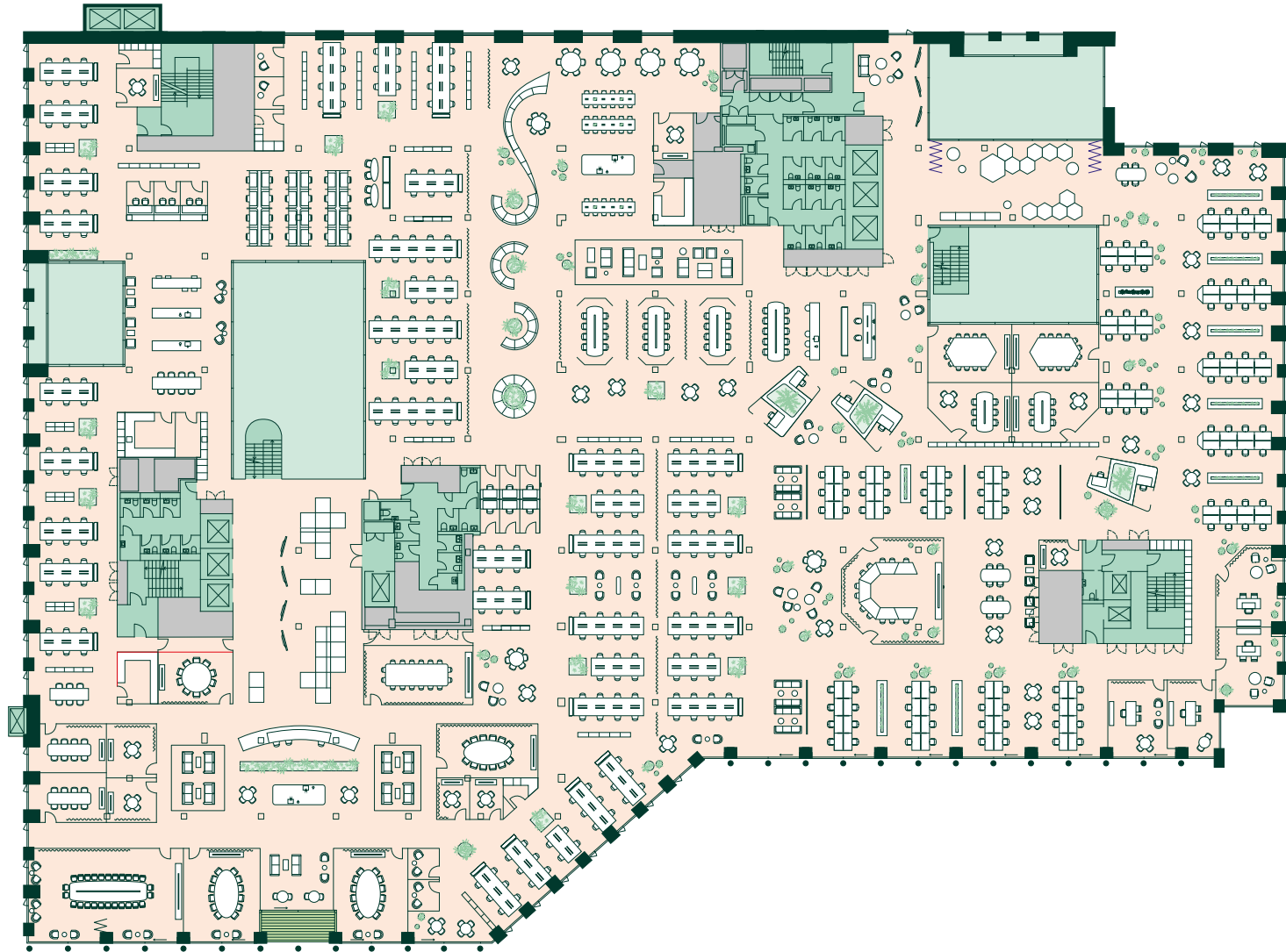


OFFICE - 54,007 SQ FT
TERRACE - 102 SQ FT

- Open Plan Office Places (356)
- 1 pp Offices (4)
- 4 pp Meeting Rooms (7)
- 6 pp Meeting Rooms (2)
- 8 pp Meeting Rooms (2)
- 10 pp Meeting Rooms (1)
- 12 pp Meeting Rooms (5)
- 12 pp Tele-Conferencing Rooms (1)
- 16 pp Meeting Rooms (1)
- 26pp Boardrooms (1)
- Call Booths (17)
- Work Booths (24)
- 8pp Semi Open Meeting Area (3)
- Kitchen (4)
- Breakout Spaces (14)

TOTAL CAPACITY (360)

- Office
- Core
- Balcony
- Plant
- Atrium



INDICATIVE CREATIVE FIT OUT



LEVEL 3

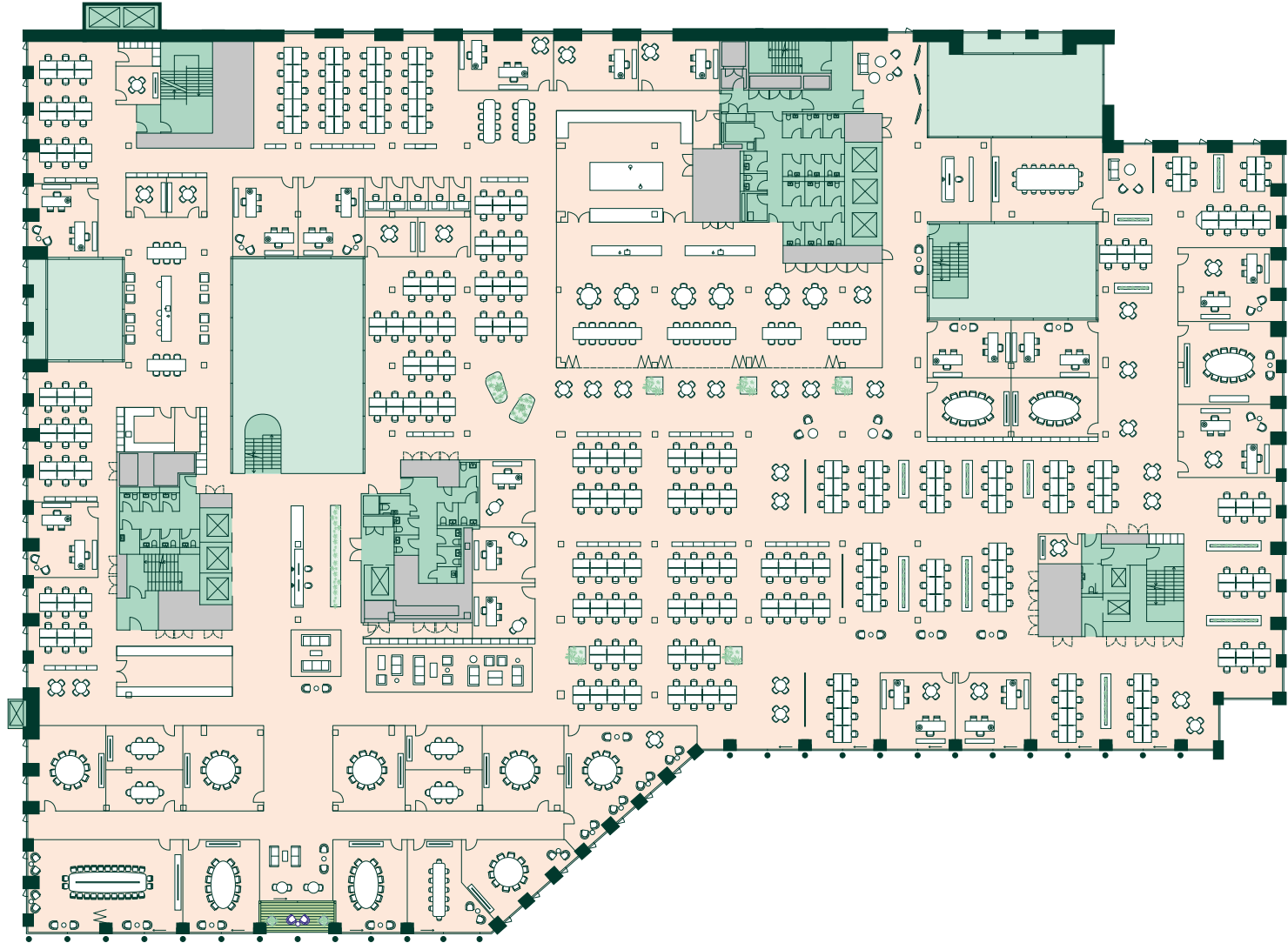


OFFICE - 54,007 SQ FT
TERRACE - 102 SQ FT

- Open Plan Office Places (366)
- 1 pp Offices (5)
- 2 pp Offices (11)
- 4 pp Meeting Rooms (6)
- 6 pp Meeting Rooms (4)
- 10 pp Meeting Rooms (6)
- 12 pp Meeting Rooms (6)
- 16 pp Meeting Rooms (1)
- 26pp Boardrooms (1)
- Call Booths (5)
- Kitchen (2)
- Tea Points (1)
- Cafeteria (places) (108)
- Breakout Spaces (7)

TOTAL CAPACITY (400)

- Office
- Core
- Balcony
- Plant
- Atrium



INDICATIVE CORPORATE FIT OUT



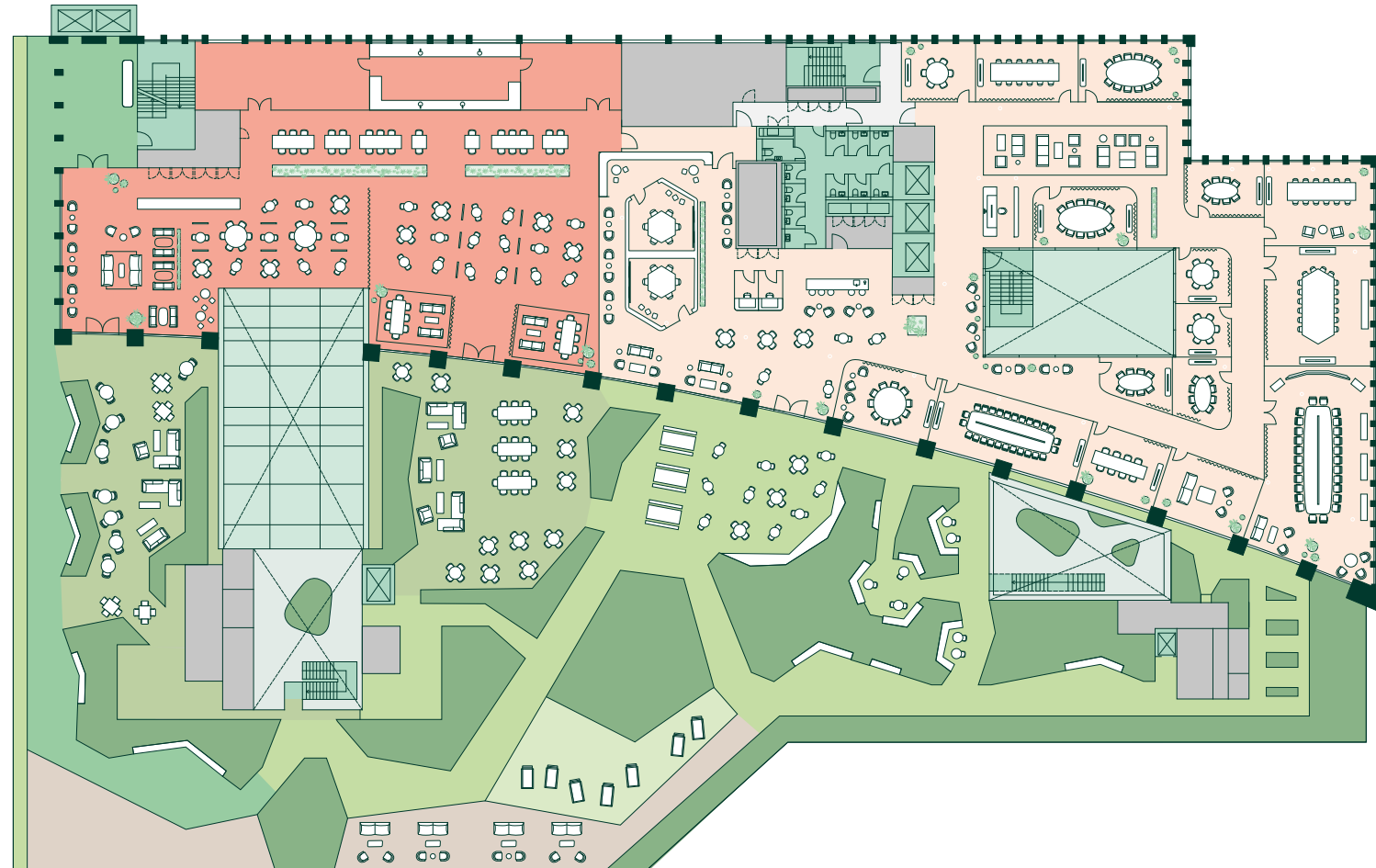
LEVEL 6



OFFICE - 13,260 SQ FT
RESTAURANT - 7604 SQ FT
TERRACE - 23,541 SQ FT

- 1pp Offices (1)
- 6pp Meeting Rooms (5)
- 8pp Meeting Rooms (4)
- 10pp Meeting Rooms (1)
- 12pp Meeting Rooms (4)
- 16pp Meeting Rooms (1)
- 26pp Meeting Rooms (2)
- Call Rooms (2)
- Kitchens (1)
- Cafe/Tea Points (1)
- Breakout Spaces/Waiting Areas (2)

- Office
- Core
- Roof Garden
- Office Gardens
- Plant
- Atrium
- Winter Gardens
- Restaurant (Internal Seating) (130)
- Restaurant (External Seating) (100)



INDICATIVE MEETING ROOM FIT OUT

ONE MILLENNIUM BRIDGE

A DEVELOPMENT BY



BELTANE



**ANGELO,
GORDON
& CO.**

CBRE

David Perowne
david.perowne@cbre.com
+44 (0)7739 814 720

Tom Meijer
tom.meijer@cbre.com
+44 (0)7540 595 379

Hannah Grint
hannah.grint@cbre.com
+44 (0)7545 868 543

RX LONDON

Frankie Warner Lacey
frankie.warnerlacey@rx.london
+44 (0)7775 895 661

Dan Burn
dan.burn@rx.london
+44 (0)7515 607 011

Hannah Buxton
hannah.buxton@rx.london
+44 (0)7976 747 569

CUSHMAN & WAKEFIELD

Alistair Brown
alistair.brown@cushwake.com
+44 (0)7771 527 350

Alex Novelli
alex.novelli@cushwake.com
+44 (0)7860 594 752

This proposal is believed to be correct at the date of publication but its accuracy is in no way guaranteed, neither does it form part of any contract. All areas, measurements and dimensions are approximate. CGI renders shown are for illustrative purposes only. Issued Q2 2024.